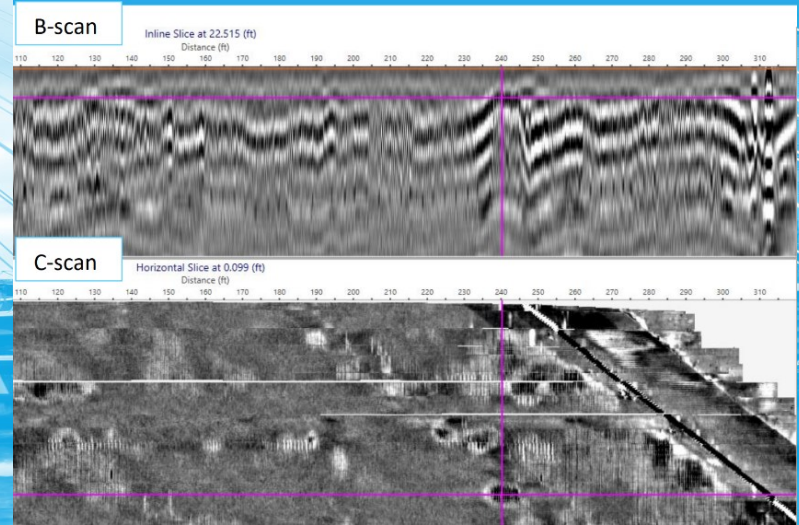
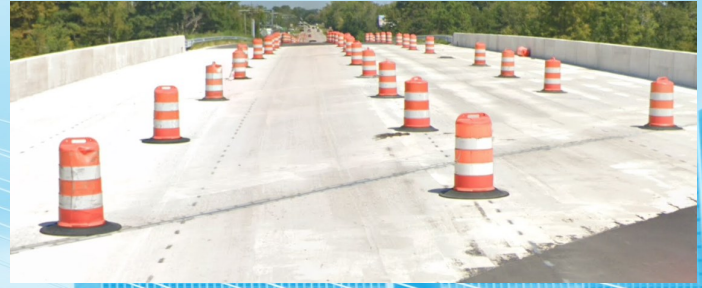


NEXCO partnered with iSee, LLC to produce a cover depth map for a newly replaced bridge in Chocowinity, NC. The mobile field data collection took only one hour, and the raw data was checked immediately following acquisition.

Post processing and reporting took only a few more days following the fieldwork. The report revealed a few areas with varying concrete cover, as seen in the image to the right.



Project Details

Client	[Contractor in NC]
Reference	[withheld]
Target Area	16,000 ft ²
Project Period	06/2023

Impression

The scan was conducted right after deck resurfacing, before opening it back up to traffic. Because a few notable differences in cover depth were found, the construction contractor and agency alike were able to discuss over the findings and determine the best path forward.